



ACE

DETERMINATION OF ACE IN SERUM OR HEPARINIZED PLASMA

Enzymatic, kinetic or initial rate method

Suitable for all analyzers – 250 tests

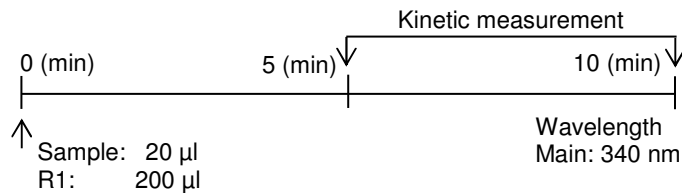
Product insert with instructions for automated and manual procedures

Stability > 6 years after production

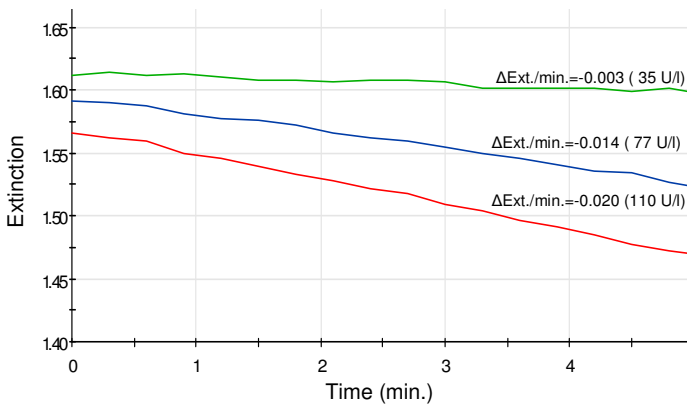
ACE calibrator and controls available

**Just 1 reagent,
liquid and ready for use**

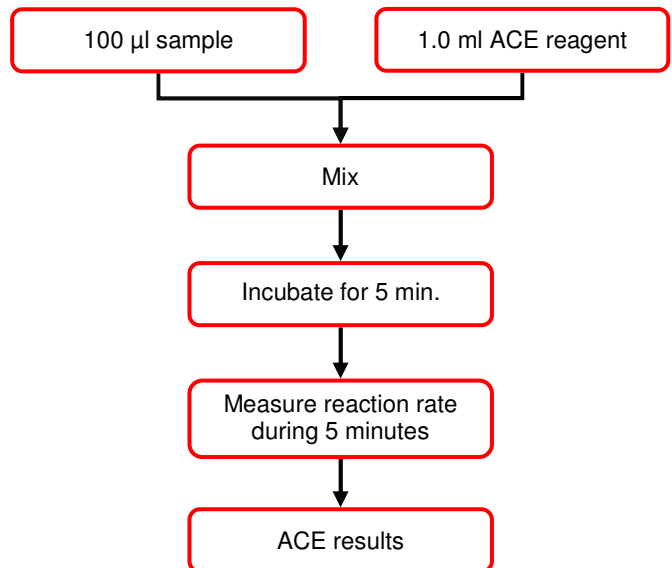
Settings for automatic analyzers



ACE kinetic measurements



Manual procedure



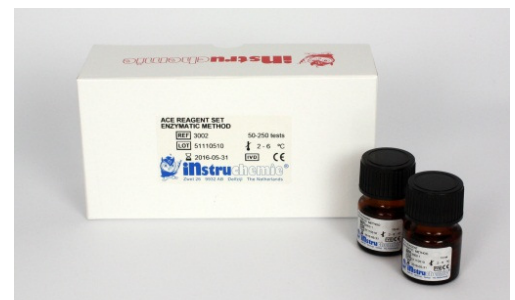
Linearity: 150 U/l

Mean CV's: 2.24%

Mean recovery: 99.9%

Correlation compared to other manufacturers: 0.958

Product name	Product no.	Quantity
ACE Reagent Set	3002	50 -250 tests
ACE Calibrator Medium Level	2997	10 x 1 ml
ACE Control Low Level	2998	10 x 1 ml
ACE Control High Level	2999	10 x 1 ml

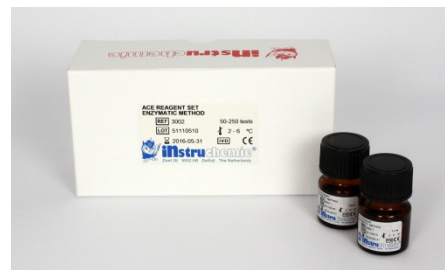




ACE

DETERMINATION OF ACE IN SERUM OR HEPARINIZED PLASMA

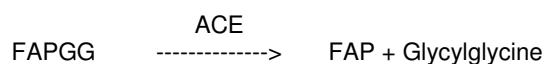
- Enzymatic, kinetic or initial rate method
- Suitable for all analyzers – 250 tests
- Product insert with instructions for automated and manual procedures
- Stability > 6 years after production
- ACE calibrator and controls available
- Wavelength 340 nm



Products	Product no.	Quantity
ACE Reagent Set	3002	50 - 250 tests
ACE Calibrator Medium Level	2997	10 x 1 ml
ACE Control Low Level	2998	10 x 1 ml
ACE Control High Level	2999	10 x 1 ml

SUMMARY

ASSAY PRINCIPLE



SAMPLE MATERIAL

Serum or heparinized plasma

LINEARITY

Up to 150 U/l

EXPECTED VALUES IN SERUM OR HEPARINIZED PLASMA

8 – 52 U/l (37°C)

QUALITY CONTROL

Products	Product no.	Quantity
ACE Control Low Level	2998	10 x 1 ml
ACE Control High Level	2999	10 x 1 ml

QUANTITY OF DETERMINATIONS

According to product insert of ACE Reagent Set (3002):

Procedure

- Manual : 50 tests
- Automated : 250 tests

NOTES

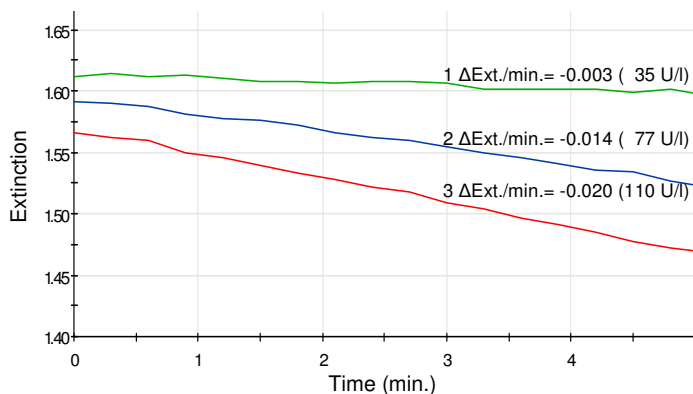
1. For in vitro diagnostic use only.
2. For professional use only.
3. Always contact INstru**chemie** for the complete product insert and latest edition.
4. Printed in the Netherlands, March 2014, edition 2.0



ACTIVITY MEASUREMENT

The activities of a low-normal (1), high (2) and extra high (3) human serum were measured with a spectrophotometer.

ACE kinetic measurements



TEST CONDITIONS

All tests were performed under the following conditions:

Temperature : 37 °C
 Wavelength : 340 nm
 Light path : Analyzer: 0.7 cm / Manual: 1.0 cm
 Blank : Reagent blank
 Sample : Serum

SENSITIVITY

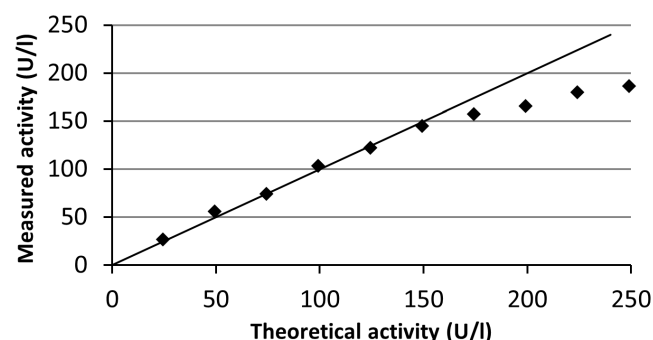
The sensitivity (limit of detection) was determined by measuring human control material (ACE activity = 0 U/l) 20 times.

Sensitivity = 3 x standard deviation = 3 x 1.5 = 4.5 U/l

LINEARITY

The ACE assay is linear up to 150 U/l.

ACE linearity measurements with an automatic analyzer



RECOVERY

The recovery is determined by measuring the ACE activity in multiple control materials and a calibrator 10 times using an automatic analyzer.

Recovery:	INstruChemie		Other manufacturer	
	Low level	High level	High level	Calibrator
Measured (U/l)	35.1	110.9	78.8	76.0
Known activity (U/l)	35.0	110.0	79.0	77.0
Recovery (%)	100.3	100.8	99.7	98.7

PRECISION

The precision is determined by measuring a human serum and ACE Control High Level 10 times a day (repeatability) for 6 consecutive days (reproducibility), using an automatic analyzer.

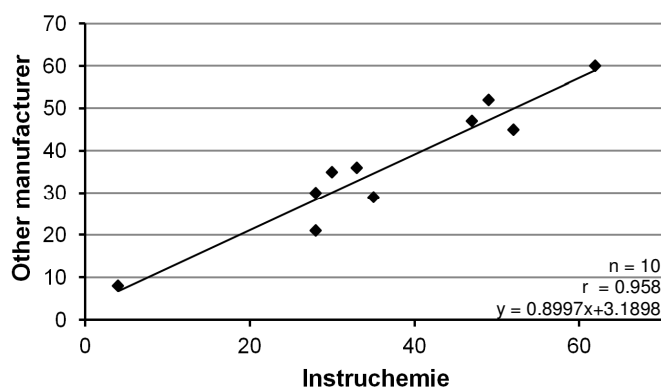
Repeatability:	Sample (U/l)	Control (U/l)
Mean	31.0	109.7
Standard deviation	0.80	2.27
Variation coefficient	2.58	2.07

Reproducibility:	Sample (U/l)	Control (U/l)
Mean	31.0	110.8
Standard deviation	0.76	2.07
Variation coefficient	2.45	1.87

CORRELATION

Pearsons' correlation is determined by measuring the ACE activity in multiple human sera with reagent of INstruChemie and reagent from another manufacturer.

Correlation measured with an automatic analyzer (U/l)





FAX – FORM: +31-(0)596 – 634 755

TELEPHONE NO.: +31-(0)596 – 634 831

EMAIL: info@instruchemie**.nl**

Attn	INstru chemie B.V. Sales & Marketing Fons Nieland, Arie Jan de Graaf
Tel no.	+31-(0)596 – 634 831
Fax no.	+31-(0)596 – 634 755
E-mail	info@instru chemie .nl
Date	March 2014
Reference	2140319-1.FEN

I would like:

<input type="checkbox"/>	Personal contact.	About:
--------------------------	--------------------------	---------------

<input type="checkbox"/>	More information.	About:
--------------------------	--------------------------	---------------

<input type="checkbox"/>	Actual prices.	Of:
--------------------------	-----------------------	------------

<input type="checkbox"/>	Catalogue.	
--------------------------	-------------------	--

Send to:

Name:			
Initials		Titel:	M / F
Function:			
Company/Lab:			
Departement:			
Address:			
City:			
Telephone:			
Fax:			
Email:			